

J. B. ENTERPRISE

— TACTILE PRODUCTS —



COMPANY PROFILE

We **“J B Enterprise”** are specialised in tactile products. We offer wide range of tactile products in Steel & P.U., which are covered in this brochure for your perusal.

“J B Enterprise” was founded in 2018. For the last 3 years we have managed continuous growth towards this industry. The quality consciousness comes first in our manufacturing process. One of the key feature of our company is that we provide complete service from manufacturing tactile products to installing them.



TABLE OF
CONTENTS

PU & Steel Products **04**

Technical Data Sheet **05**

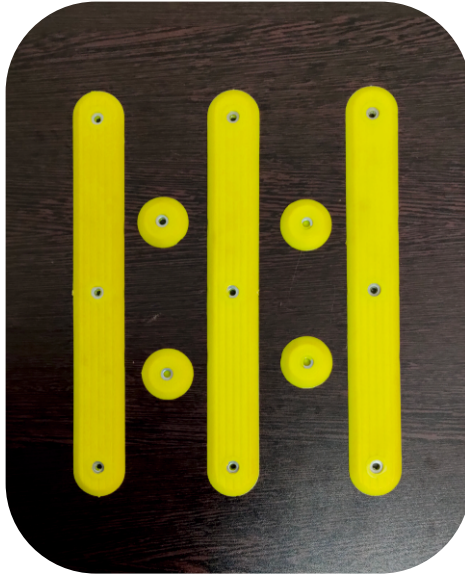
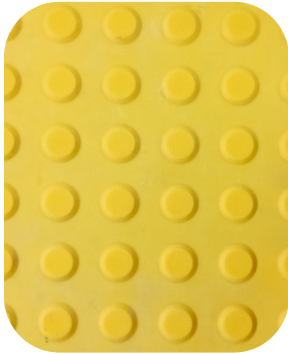
Installation Process **06**

Mumbai Metro Station **07**

Completed Projects **08**



P.U. PRODUCTS



STEEL PRODUCTS





Technical Data Sheet of Tactile Products

Product Feature, Technical Dimensions

- Can be installed to almost any existing or new surface, adapting neatly to uneven surfaces.
- The high shear strength, UV light stable material ensures excellent durability with virtually no maintenance.
- Individual indicators provide greater aesthetic appeal on many surfaces.
- This provides a superior mechanical bond with the substrate ensuring the long term integrity of the installation by denying access to water and debris under the unit.
- Self cleaning anti-slip treads.
- Raised anti-slip edge.
- Grade Available in Tactile-Products {304,316}



**BANARAS
AIRPORT**



**JHARSUGUDA
AIRPORT**



**BARODA
AIRPORT**

Installation Process

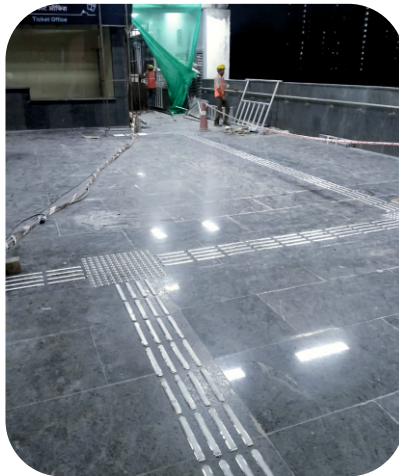
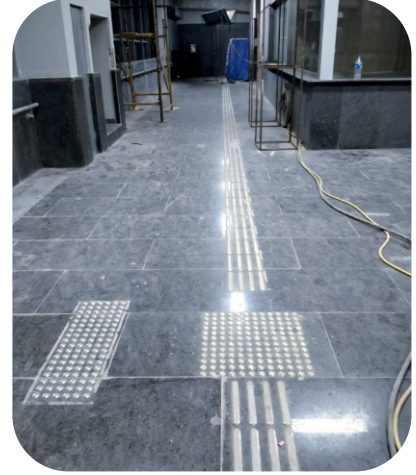
- Installation utilizes a template system and is undertaken by trained installers with specialized equipment.
- The Tactile Indicators (warning domes and directional bars) are adhesive fixed into pre drilled holes.
- The shaft or stem ensures permanent installation.
- As each stud is installed independently and sealed with epoxy, any water retention and multiple failures are eliminated.
- Individual Tactile Indicators are installed over the existing surface leaving the surrounding substrate visible.
- Our installations are always carried out using a specially formulated two part epoxy in addition to friction fitting the studs.
- Friction and epoxy fitted shaft for installation.



**INSTALLATION AT SUPREME COURT (LAWYER'S CHAMBER)
NEW DELHI**



MUMBAI METRO STATION





Completed Projects

- ◆ Baroda Airport
- ◆ Banaras Airport
- ◆ Patna Airport
- ◆ Rajkot Airport
- ◆ Ladakh Airport
- ◆ Kanpur Airport
- ◆ Jharsuguda Airport
- ◆ Jammu Airport
- ◆ Bhavnagar Airport
- ◆ Keshod Airport

- ◆ Greater Noida Sleepwell Office
- ◆ High Court - New Delhi
- ◆ Supreme Court - New Delhi
- ◆ Mumbai Metro - Line 2A & Line 7



Samrat Street No.3, Behind S.t.workshop,
Gondal Road, Rajkot - 360 004



j.b.enterprise2526@gmail.com



We Support

